



LINEAR MOTION PLUG & PLAY

ABOUT COBOTRACKS

Cobotracks is located at the technology park “Thor Park” in Genk Belgium. It offers solutions to companies who would like to extend the reach of their cobot. The cobot can move across a linear track and for example stack multiple pallets.

For Techman Robot Cobotracks developed the “Linear Motion Plug & Play”. This kit has compatible software for the Techman Robot which guarantees a plug & play solution. For other cobot brands the “Linear Motion Axis” and the “Linear Motion Kit” offers the solution to extend their range. Cobotracks uses the “Linear Motion Plug & Play” solution as the base to offer customized solutions for each cobot application.

COBOTRACKS STANDS FOR:



EXPERTISE



CUSTOMIZED



QUALITY



**SHORT
COMMUNICATION
LINES**



FEATURES

- /// Robust industrial steel design
- /// Aluminum and stainless solutions available
- /// High accuracy
- /// 100% cycle time with 100% load on robot
- /// Customized solutions
- /// Length up to 50m
- /// Collision detection
- /// TM Component Software
 - » Easy to install and program
 - » Adjustable speed
 - » Infinite programming points



APPLICATIONS

EXTEND THE REACH OF YOUR COBOT



**MULTIPLE MACHINE
TENDERING**



**MULTIPLE PALLET
PALLETISING**



**WELDING
BIG PARTS**



**POLISHING &
GLUING BIG PARTS**

TM COMPONENT SOFTWARE

Set-up: initialisation component

- ▮ The installation can be done in less than 30 min
- ▮ Automatic IP search function
- ▮ Properties track to set: track length and maximum speed
- ▮ Set collision detection threshold

AXIS_COBOTRACKS_LMPP_V000_INITIALISE

Provider: Cobotracks

Node Name: LMPP_V000_INITIALISE1

- LMPP_Home_Position
- LMPP_Robot_Safe
- LMPP_Track_Properties
- LMPP_IP_Address

☐ Advanced

OK Delete this node

Programming: move to component

- ▮ Use the component
- ▮ Program a target position
- ▮ Program a target speed

AXIS_COBOTRACKS_LMPP_V000_MOVETO

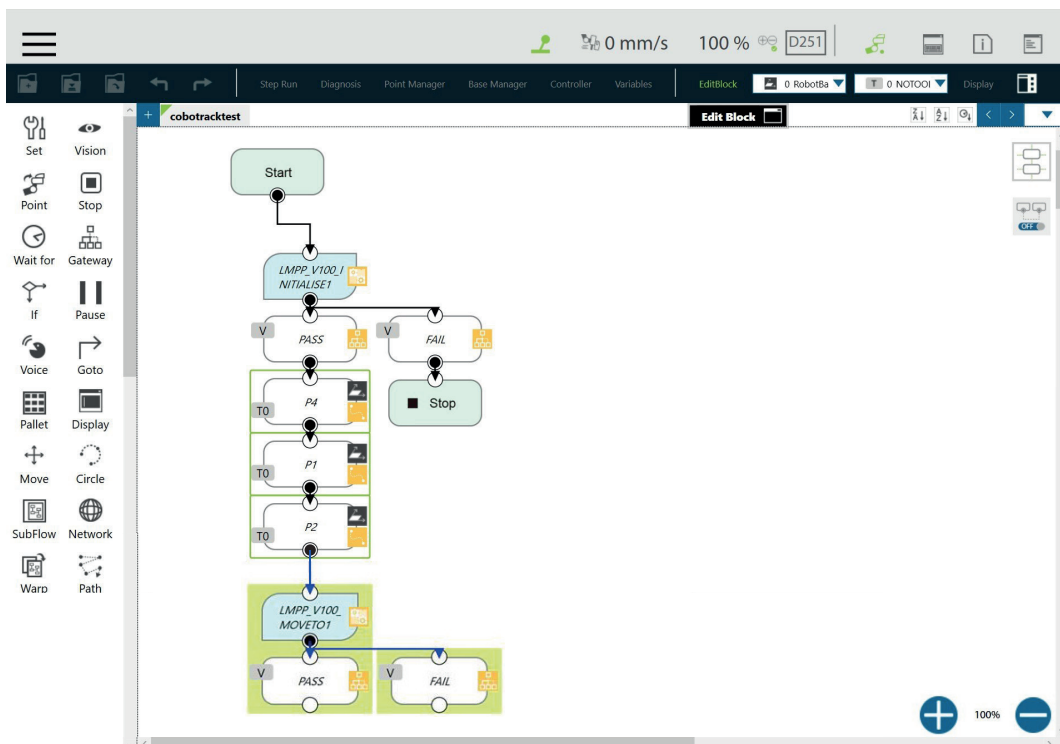
Provider: Cobotracks

Node Name: LMPP_V000_MOVETO1

- LMPP_Target_Position
- LMPP_Target_Speed

☐ Advanced

OK Delete this node



LINEAR MOTION PLUG & PLAY INCLUDES

- ▮ Axis with limit switches
- ▮ SEW servo motor
- ▮ Planetary gearbox
- ▮ Cables cable chain
- ▮ Control box with SEW drive
- ▮ Motor and power cables
- ▮ USB with TM component software
- ▮ English instruction manual

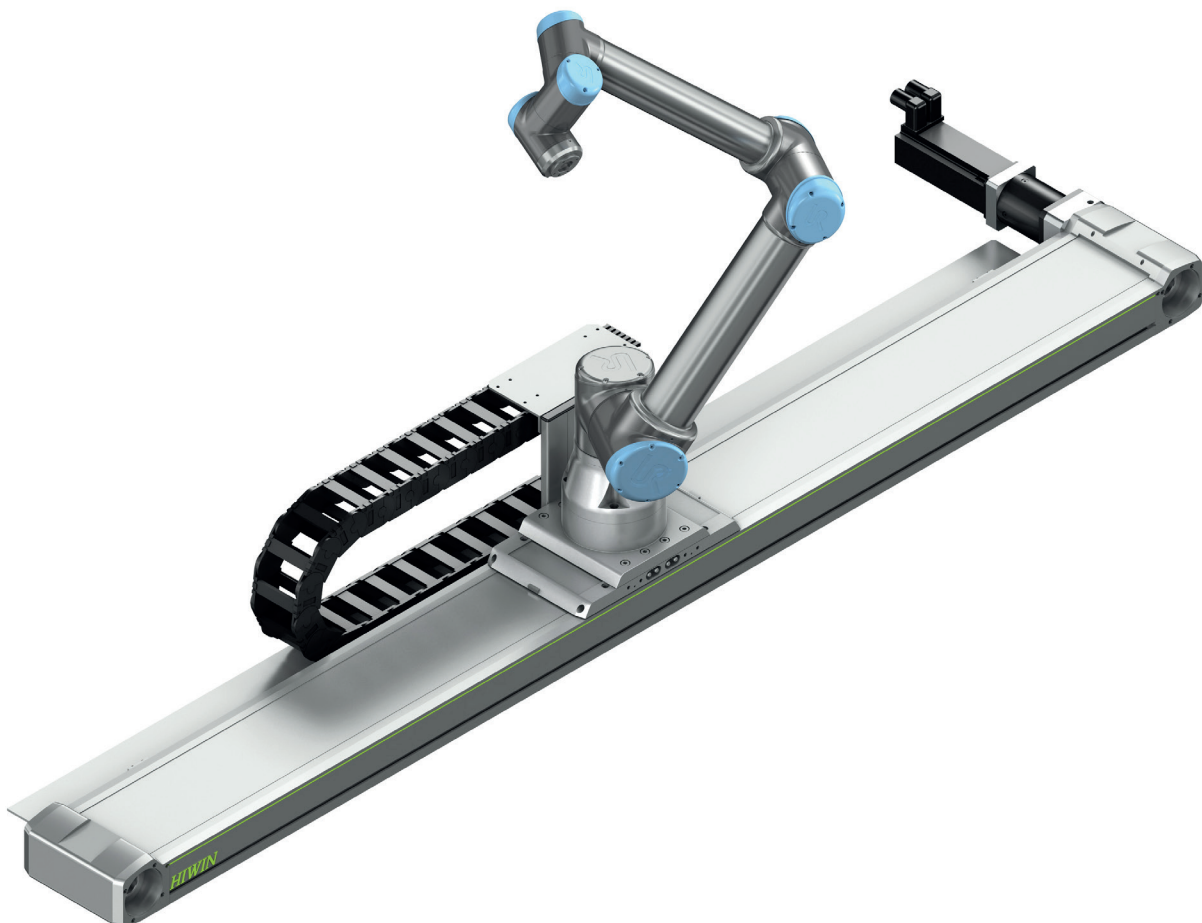
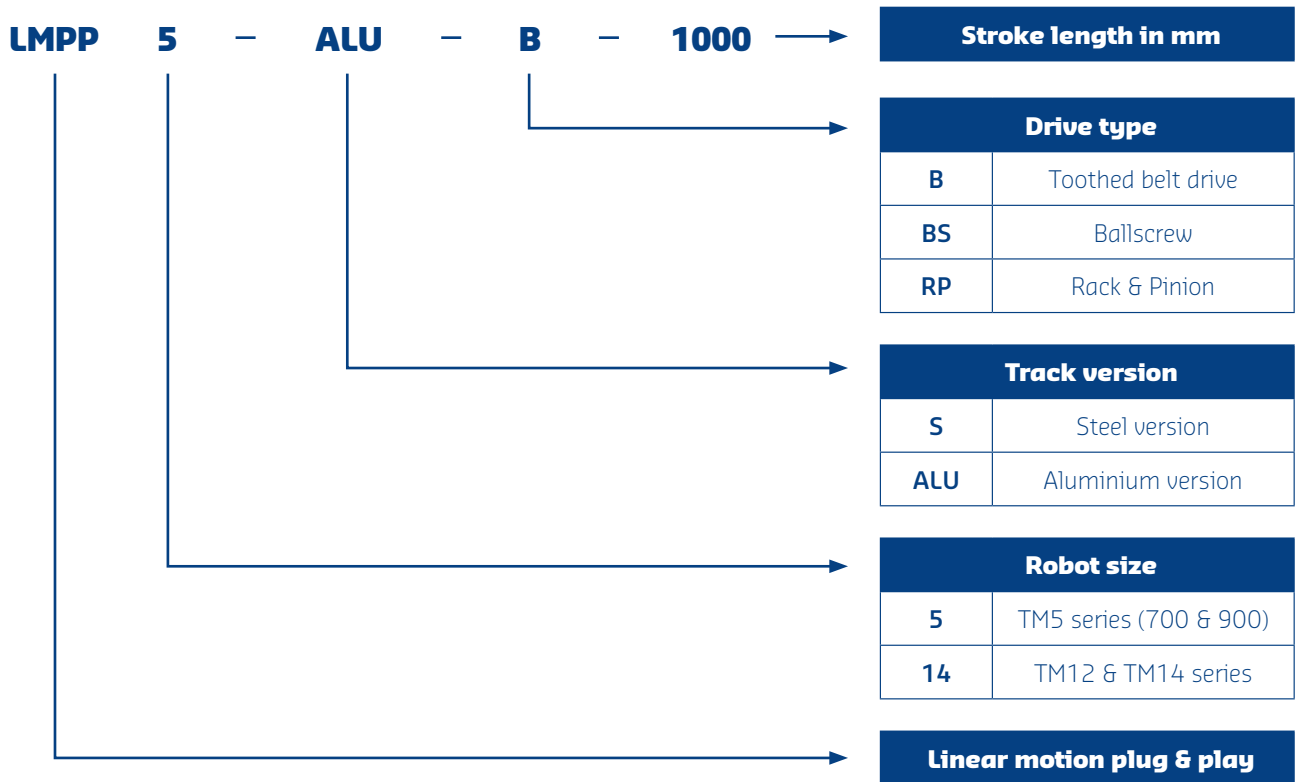
Examples of customized solutions

- ▮ Folding bellows
- ▮ Long lengths based on rack and pinion
- ▮ 90° carriage
- ▮ Additional support structure
- ▮ High speed variant
- ▮ 200V power supply



ORDERING KEY

OF OUR COBOTRACKS

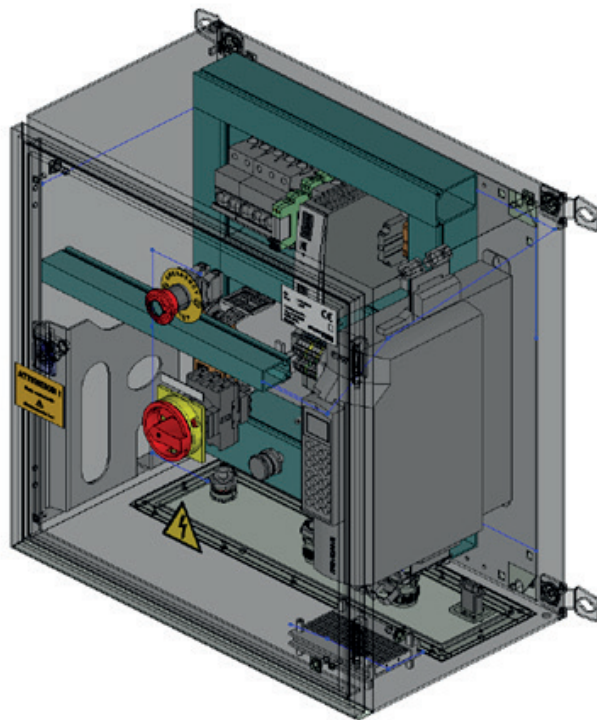


GENERAL SPECIFICATIONS

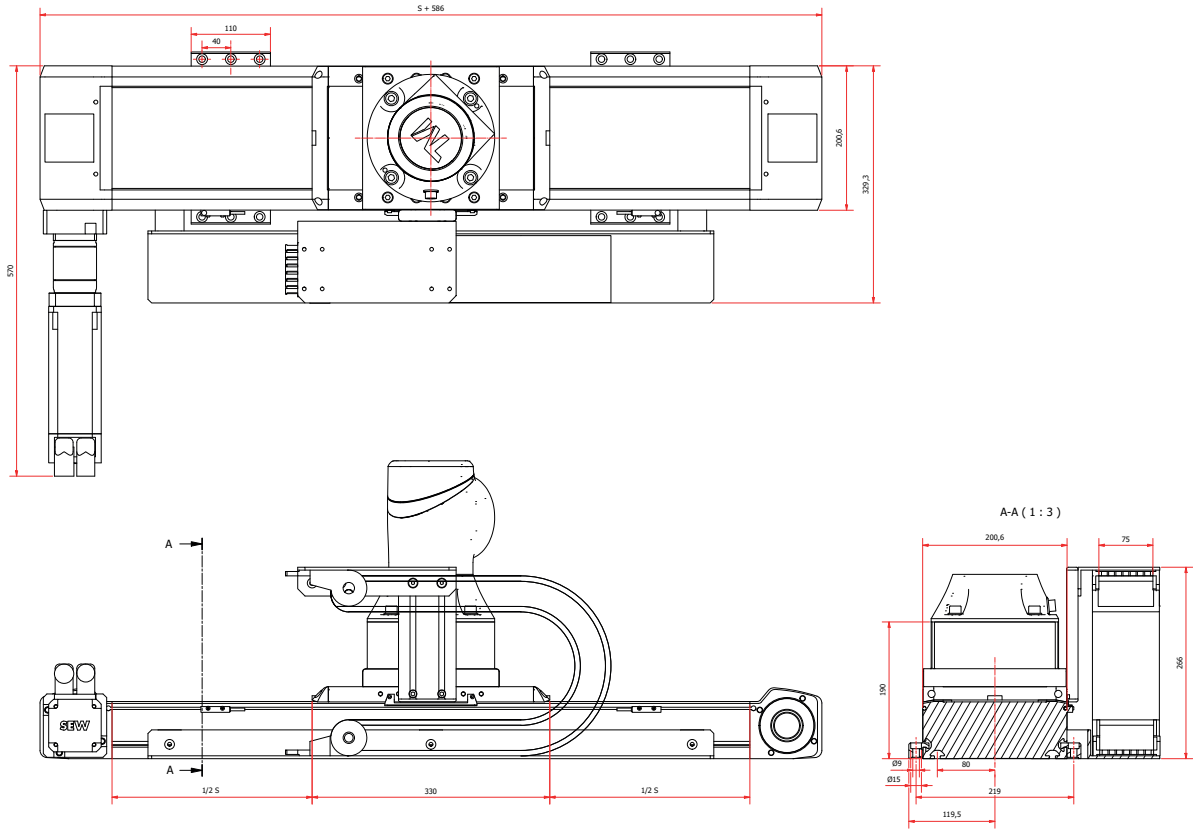
OF OUR COBOTRACKS

Specifications	Toothed belt drive	Ballscrew	Rack & pinion
Max. stroke [mm]	7000	2500	50 000
Max. speed [mm/sec]	250	250	250
Duty cycle [%]	100	100	100
Repeatability [mm]	± 0.1mm	± 0.05mm	± 0.1mm
Ambient temperature [°C]	-10°C to 60°C	-10°C to 60°C	-10°C to 60°C
Electrical input	380V	380V	380V

Rack and pinion drawings on request.

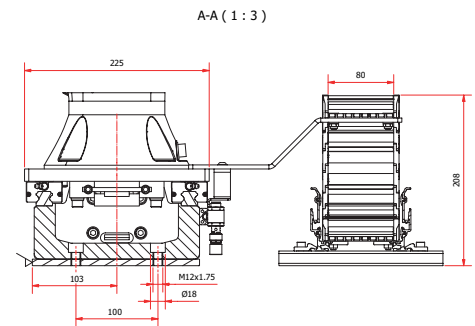
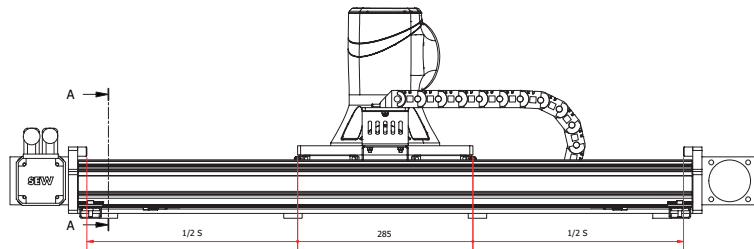
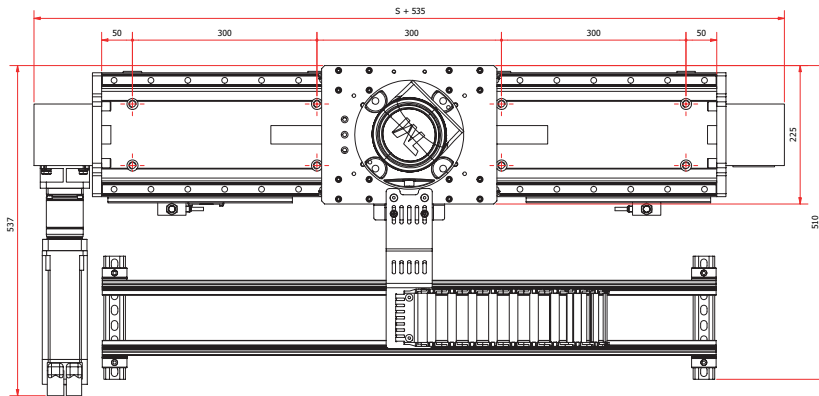


LMPP5-ALU-B



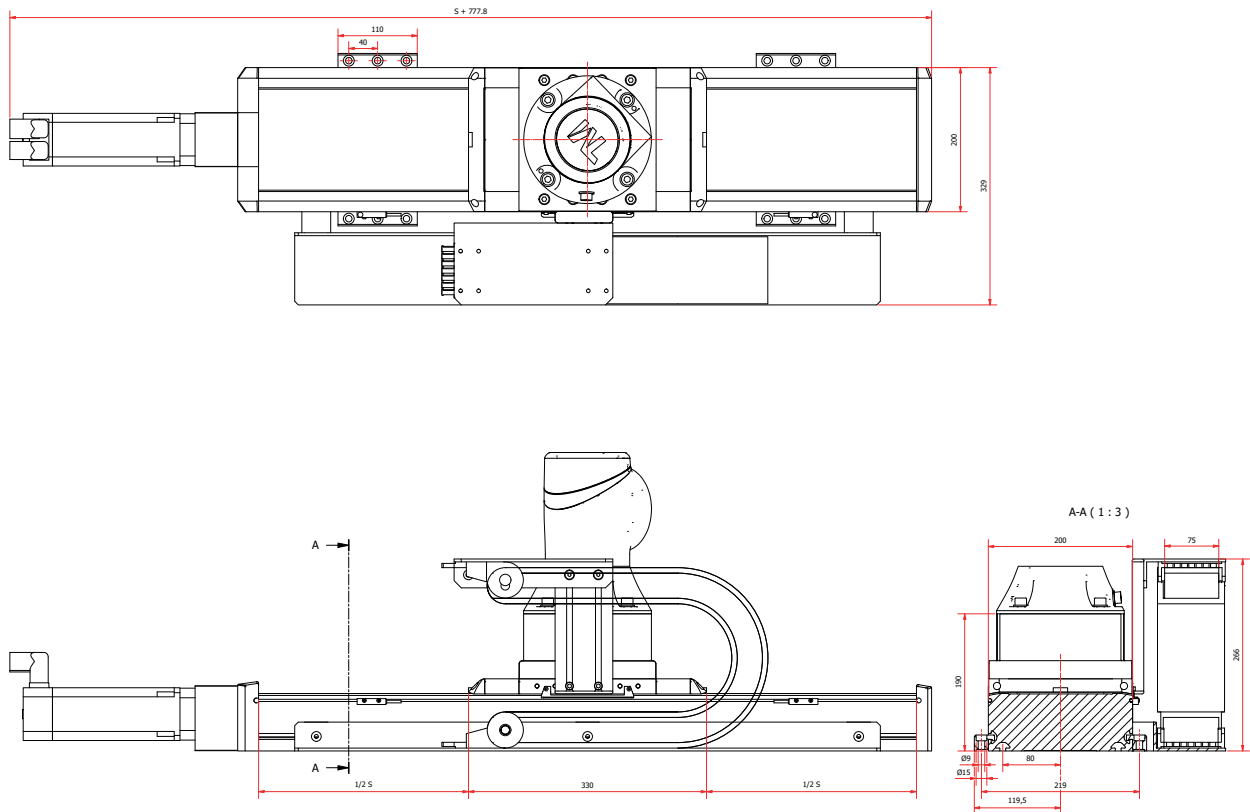
LMPP5-ALU-B	
Robot type	TM5 Series (700 & 900)
Base weight [kg]	21.9 kg
Weight [per 100mm]	1.8 kg

LMPP5-S-B



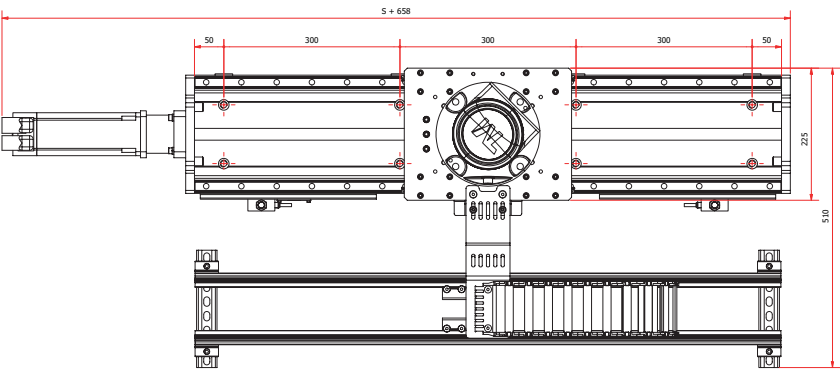
LMPP5-S-B	
Robot type	TM5 Series (700 & 900)
Base weight [kg]	37 kg
Weight [per 100mm]	5.8 kg

LMPP5-ALU-BS

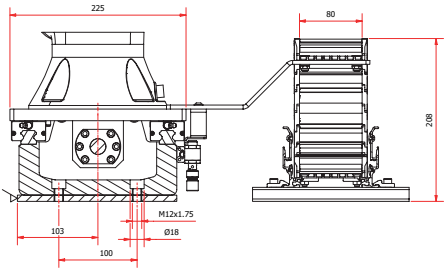
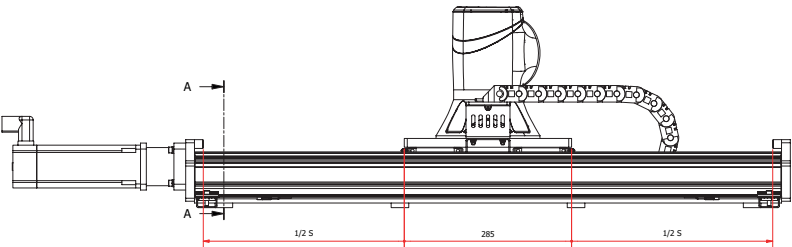


LMPP5-ALU-BS	
Robot type	TM5 Series (700 & 900)
Base weight [kg]	19.4 kg
Weight [per 100mm]	2.1 kg

LMPP5-S-BS

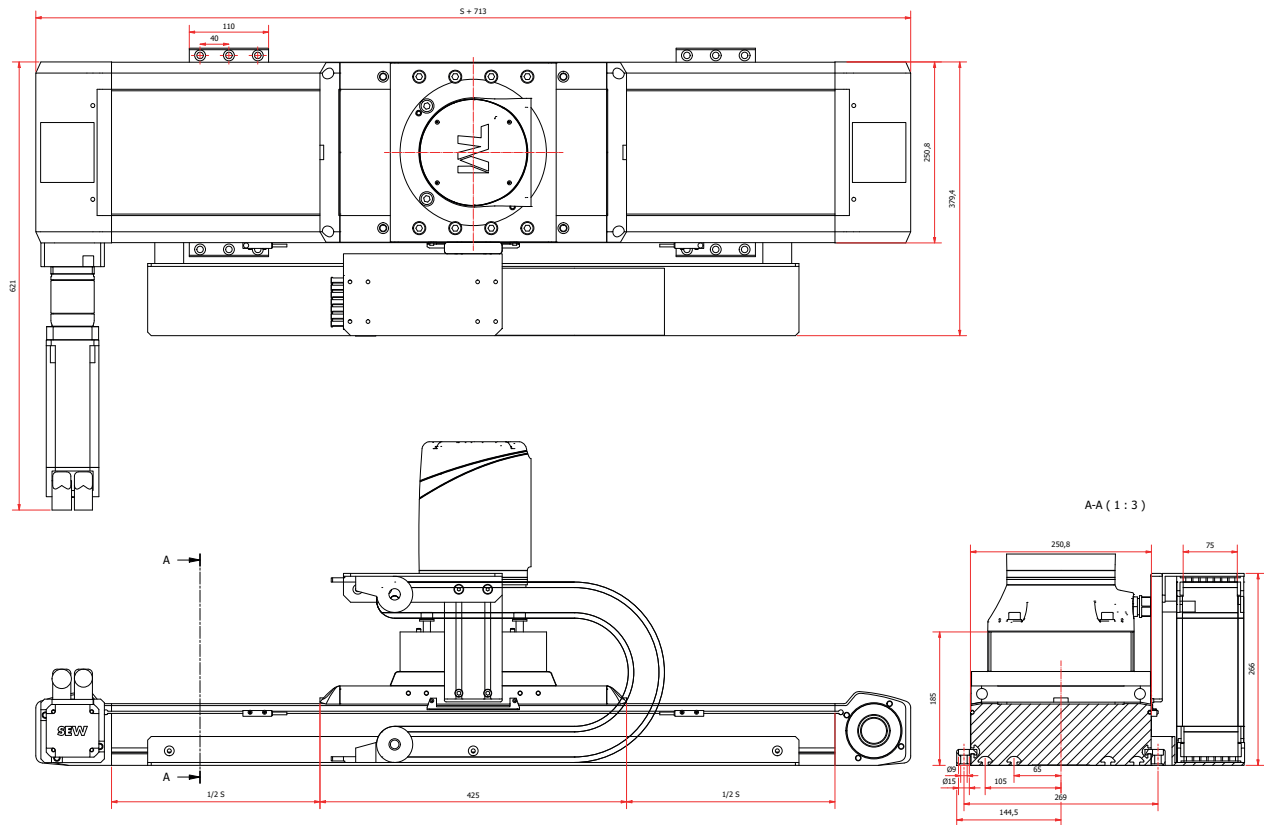


A-A (1 : 3)



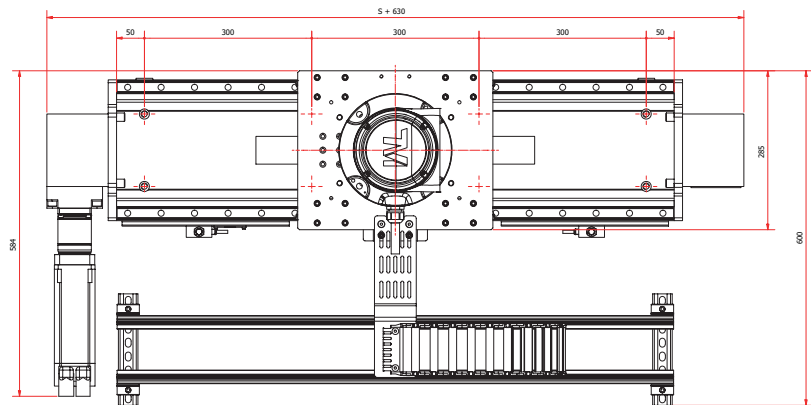
LMPP5-S-BS	
Robot type	TM5 Series (700 & 900)
Base weight [kg]	35 kg
Weight [per 100mm]	6 kg

LMPP14-ALU-B

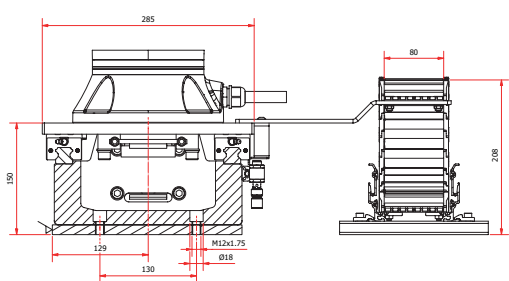
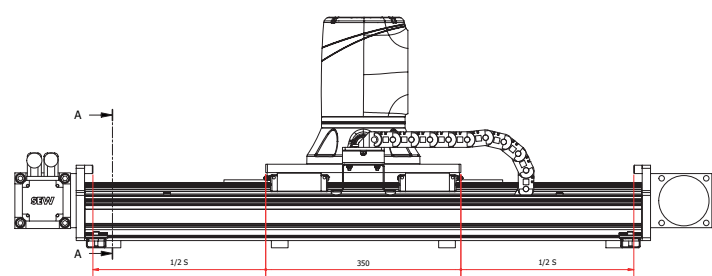


LMPP14-ALU-B	
Robot type	TM12 & TM14
Base weight [kg]	38.1 kg
Weight [per 100mm]	2.3 kg

LMPP14-S-B

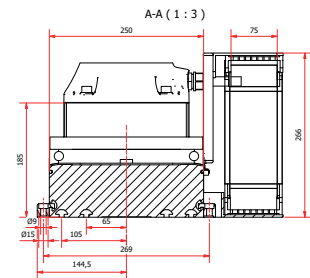
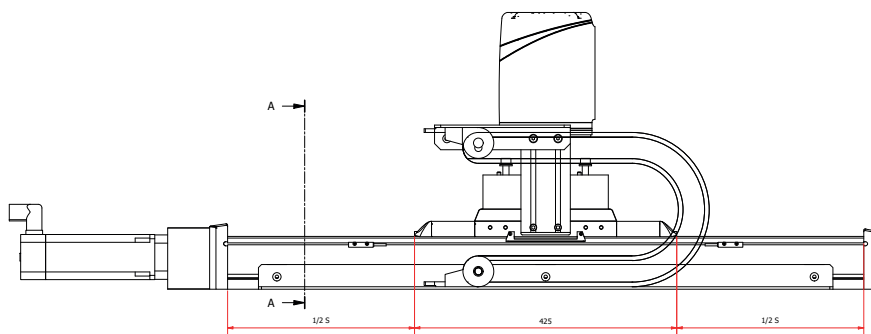
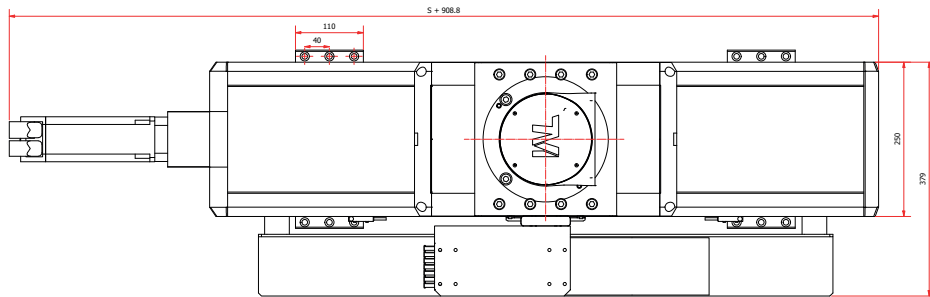


A-A (1 : 3)



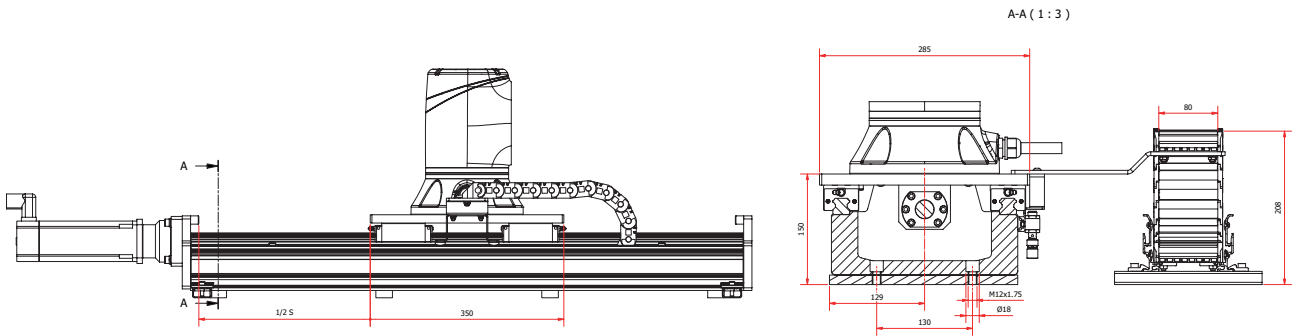
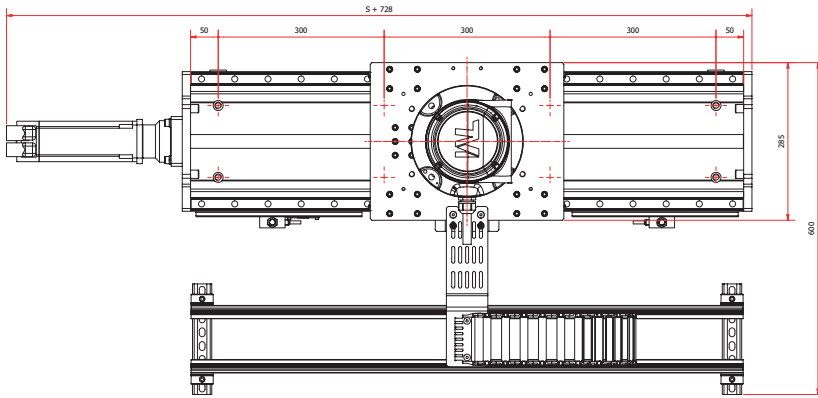
LMPP14-S-B	
Robot type	TM12 & TM14
Base weight [kg]	65 kg
Weight [per 100mm]	8.7 kg

LMPP14-ALU-BS

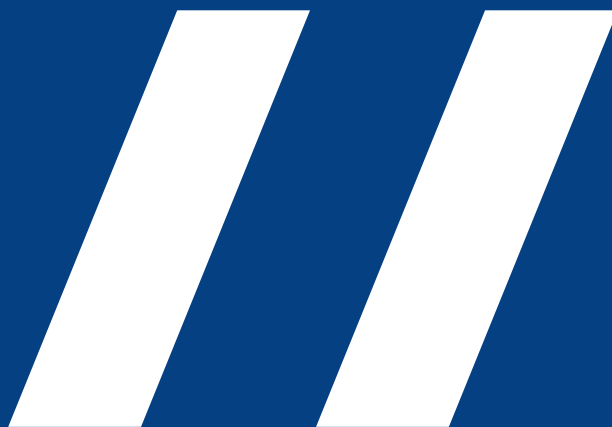


LMPP14-ALU-BS	
Robot type	TM12 & TM14
Base weight [kg]	34.5 kg
Weight [per 100mm]	2.8 kg

LMPP14-S-BS



LMPP14-S-BS	
Robot type	TM12 & TM14
Base weight [kg]	61 kg
Weight [per 100mm]	9.1 kg



CONTACT

THOR PARK 8300
3600 GENK (B)

M +32(0)474 81 18 73
E INFO@COBOTRACKS.COM

VAT BE0727.999.648